



ADMIRAL
STAGING

MEAT-RACK

Store and transport your moving heads, lighting bars and single luminaires with our Meatrack cart. Depending on the amount and size of your fixtures, you can build your ideal Meatrack in your desired height, width and length. Choose hanging tubes, in aluminum or steel, to create the desired storage space for your fixtures.



KEY FEATURES

Design your own cart

Build a Meatrack step-by-step in the configuration that best suits your needs.

Efficient design

Pre-drilled holes in the side panels allow you to place the hanging tubes at any height and thus, maximize the use of space.

Versatile options

Choose the 183 cm height for easy transport in a van or through low doorways without losing storage space. The 80 cm wide panels are ideal for larger fixtures.

www.admiralstaging.com

TECHNICAL DATA

1 CHOOSE SIDE PANELS

Fork-side panel set of 2 (width 60 cm)

Heights available:	110 cm	110 cm	183 cm	183 cm	203 cm	203 cm
Article code:	WAFSF11A	WAFSF11B	WAFSF15A	WAFSF15B	WAFSF21A	WAFSF21B
With centre bracket:	no	yes	no	yes	no	yes
Material:	steel					
Finish:	powder coated					
Colour:	black gloss 30% (RAL 9005)					

* boltset included

Fork-side panel set of 2 (width 80 cm)

Heights available:	183 cm	183 cm	203 cm	203 cm
Article code:	WAFSF17A	WAFSF17B	WAFSF31A	WAFSF31B
With centre bracket:	no	yes	no	yes
Material:	steel			
Finish:	powder coated			
Colour:	black gloss 30% (RAL 9005)			

*boltset included

2 CHOOSE LENGTH PROFILES

Length profiles set of 4

Lengths available:	80 cm	160 cm	180 cm	210 cm
Article code:	WALPSL080	WALPSL160	WALPSL180	WALPSL210
Dimensions mm:	773 x 20 x 40	1588 x 20 x 40	1773 x 20 x 40	2073 x 20 x 40
Material:	steel			
Finish:	powder coated			
Colour:	black gloss 30% (RAL 9005)			

3 CHOOSE CASTORS

Castors set of 4

Sets available:	2 x Swivel with brake 2 x Swivel no brake	4 x Swivel with brake
Article code:	WACS100B	WACS100A
Max load*:	200 kg per castor	200 kg per castor
Diameter mm:	Ø 100	
Sets available:	2 x Swivel with brake 2 x Swivel no brake	4 x Swivel with brake
Article code:	WACS125B	WACS125A
Max load:	220 kg per castor	220 kg per castor
Diameter mm:	Ø 125	

*The Max load is determined according to the applicable standards and guidelines.

4 CHOOSE HANGING TUBES

Hanging tubes with forkset

Lengths available:	80 cm	160 cm	180 cm	210 cm
Article code:	WARTS0080	WARTS0160	WARTS0180	WARTS0210
WLL:	100 kg per tube	100 kg per tube	100 kg per tube	100 kg per tube
Material:	black aluminium	black aluminium	black aluminium	powder coated steel
Colour:	black gloss 30% (RAL 9005)			
Diameter mm:	Ø 50	Ø 50	Ø 50	Ø 48

*2 x Meatrack forkset 50 mm with bolts included

The Meatrack has a maximum load of 400 kg, with each hanging tube able to handle up to 100 kg.

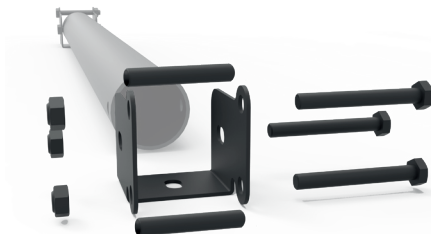
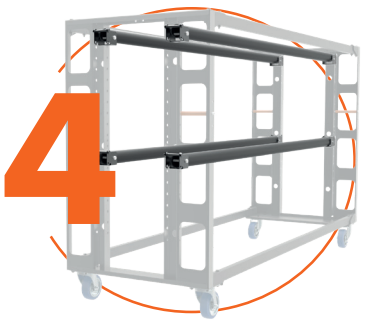
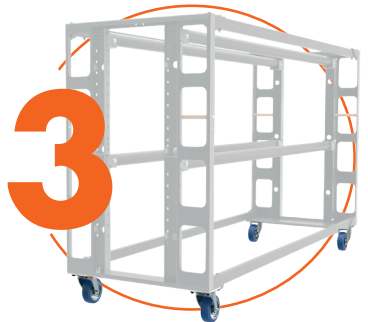
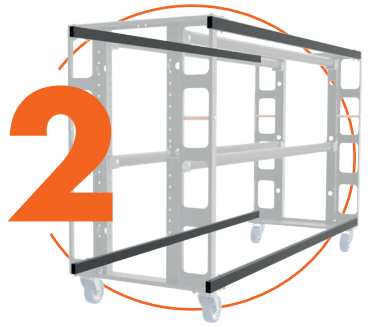
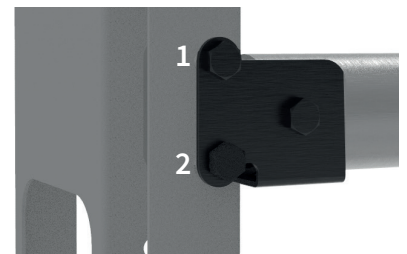
When assembling the Meatrack, make sure each fork set is fixed to the panels using two bolts.

To avoid bending the fork-side panels by tightening the fork sets too much, we recommend using spacer tubes when you install the hanging tubes.

*boltset is included in all 4 sets



Check out our **video** for more details.





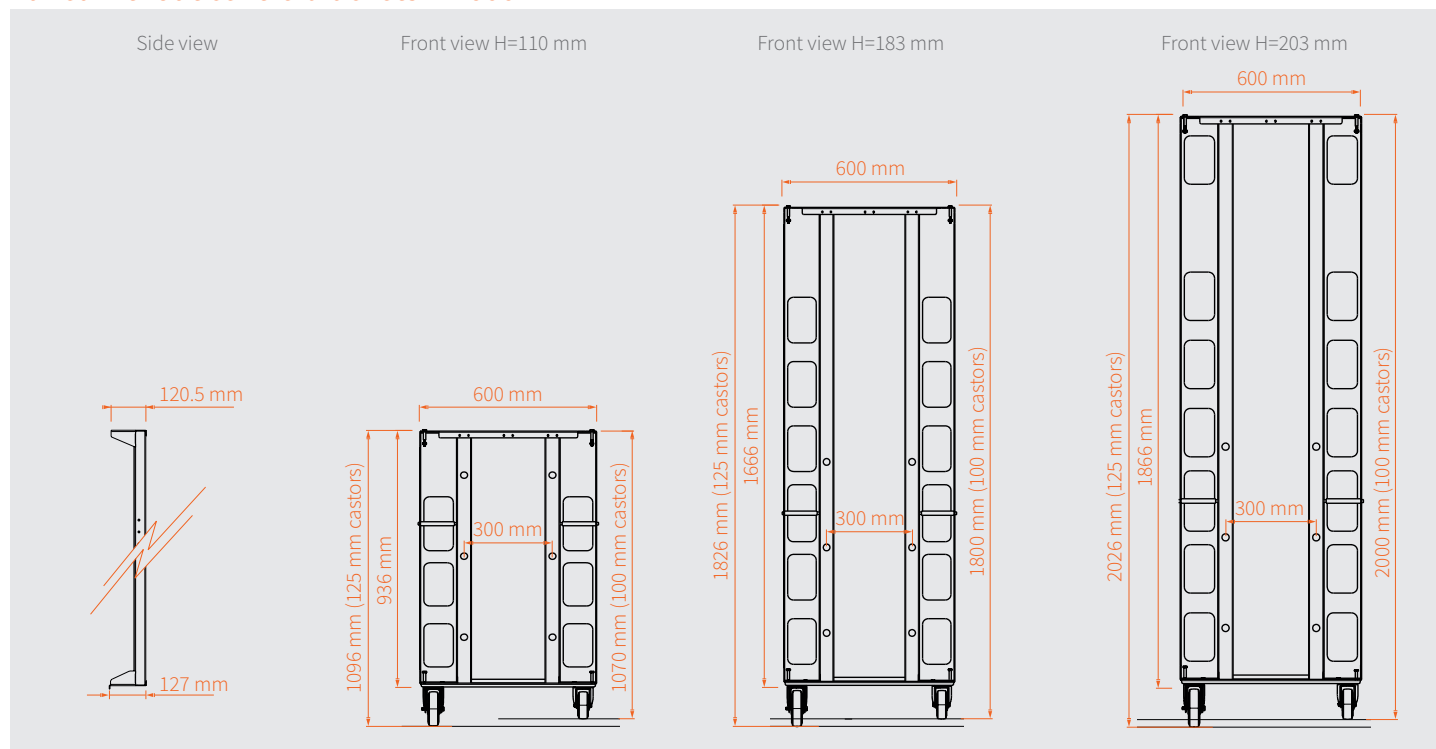
Centre bracket set of 2

Heights available:	H110	H183	H203
Article code:	WAM2P03	WAM2P04	WAM2P05
Dimensions mm :	936	1666	1866
Material:	steel		
Finish:	powder coated		
Colour:	black gloss 30% (RAL 9005)		

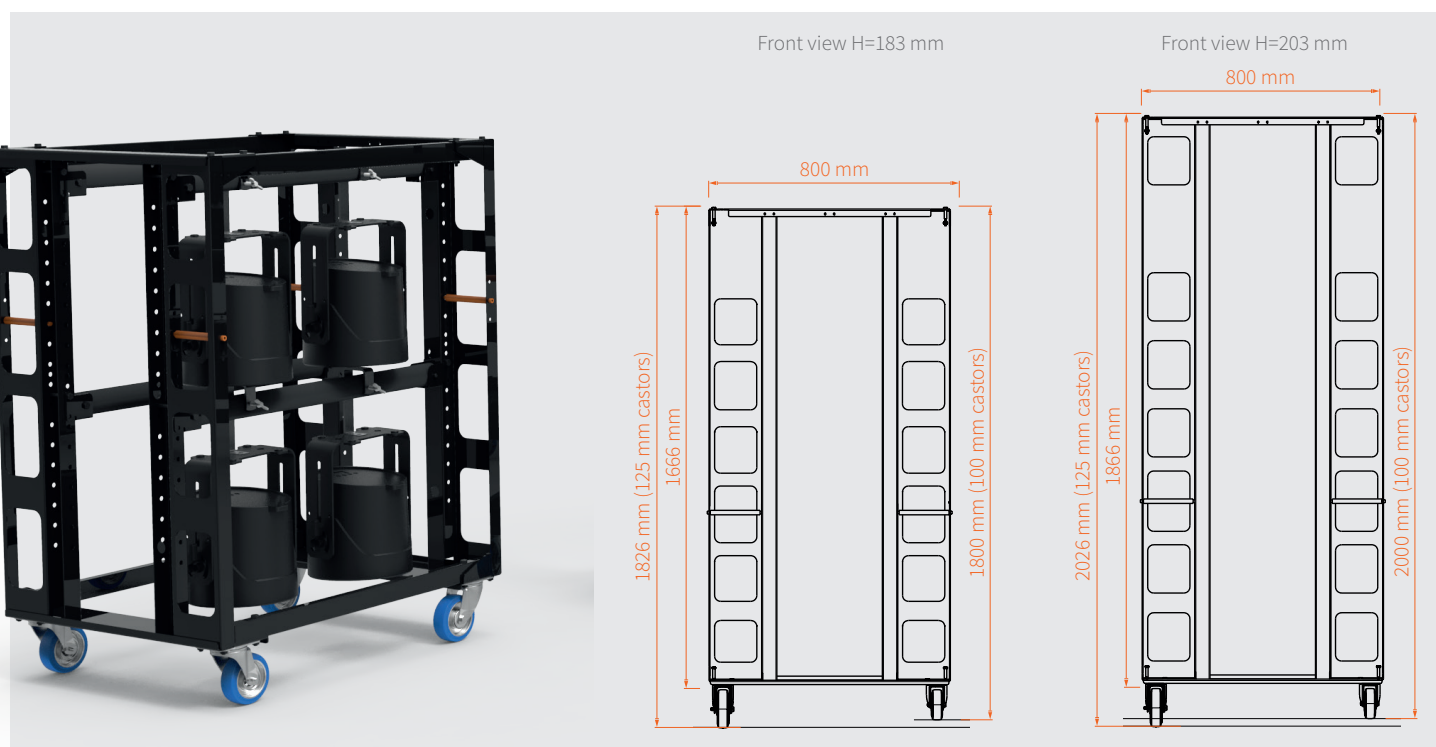
* centre brackets can be purchased separately and mounted on fork-side panels without one

** centre bracket set includes screws

Panel without centre brackets W=600 mm



Panel without centre brackets W=800 mm



ADMIRAL
STAGING

| www.admiralstaging.com | Josink Kolkweg 10 | 7545 PR Enschede | The Netherlands | Tel: +31 53 4 301 201 |