


# 1080p60 PTZ Camera with USB 3.0, HDMI Out, NDI, Auto Framing

## CAM-210-NDI-PTZ



## Quickstart Guide

 WyreStorm recommends reading through this document in its entirety to become familiar with the product's features prior to starting the installation process.



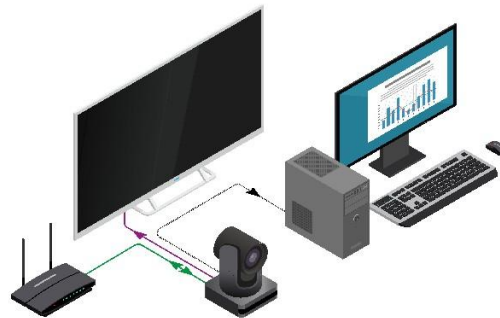
### IMPORTANT! Installation Requirements

- Visit the product page to download the latest firmware, document version, additional documentation, and configuration tools.
- Read through the [Wiring and Connections](#) section for important wiring guidelines before creating or choosing premade cables.

### In the Box

1x CAM-210-NDI-PTZ Camera  
1x 12V DC 1A PSU (US/UK/EU/AU)  
1x IR Remote  
1x Wall Mount  
1x 2m 8 pin Mini Din RS-232 Cable  
1x 1.5m USB 3.0 Type B Host Cable  
1x QuickStart Guide

### Basic Wiring Diagram



#### KEY

- USB 3.0
- Ethernet
- HDMI

### Wiring and Connections

WyreStorm recommends that all wiring for the installation is run and terminated prior to making connections to the switcher. Read through this section in its entirety before running or terminating the wires to ensure proper operation and to avoid damaging equipment.

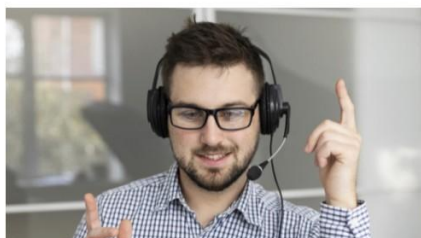
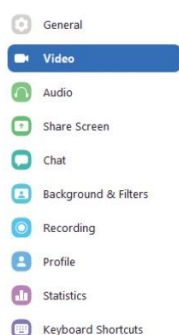
### IMPORTANT! Wiring Guidelines

- The use of patch panels, wall plates, cable extenders, kinks in cables, and electrical or environmental interference will have an adverse effect on signal transmission which may limit performance. Steps should be taken to minimize or remove these factors completely during installation for best results.
- WyreStorm recommends the use of shielded category cable to minimize signal noise and interference.
- WyreStorm recommends using pre-terminated cables due to the complexity of these connector types. Using pre-terminated cables will ensure that these connections are accurate and will not interfere with the performance of the product.

### Software Device Setup

#### Connecting To Zoom

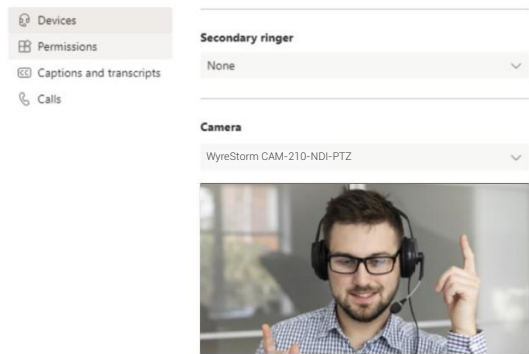
To connect the WyreStorm CAM-210-NDI-PTZ to your Zoom software, first navigate to your settings pane which can be found by clicking the gear icon in the top right hand corner, then click on the Video tab. Here you can change the camera device by using the dropdown menus. Select WyreStorm CAM-210-NDI-PTZ under the applicable options.



Camera  
WyreStorm CAM-210-NDI-PTZ  
☐ Original ratio ☒ HD

Connecting To Microsoft Teams

To connect the WyreStorm CAM-210-NDI-PTZ to your Microsoft Teams software, first navigate to your settings pane which can be found by clicking on your display image in the top right-hand corner, then click on the devices tab. Here you can change the camera device by using the dropdown menus. Select WyreStorm CAM-210-NDI-PTZ under the applicable options.



Setup and Configuration

Accessing the Web UI

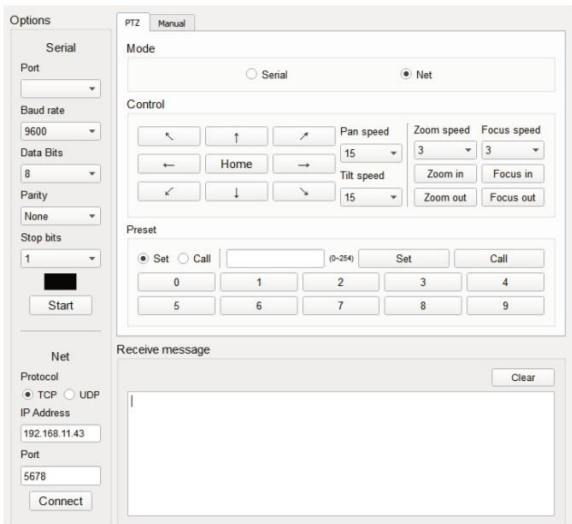
This camera is set to a default static IP Address (192.168.11.43). To communicate with it initially the PC must be set to a 192.168.11.xxx address with a subnet of 255.255.0.0. This can be changed back once a static IP is set within a different range.

- 1. Connect the camera to the same network as a PC.
- 2. Open a web browser and enter the IP Address of the camera.  
Username: admin | Password: admin

Default IP Address	192.168.11.43	Default HTTP Port	80	VISCA Control Port	5678
--------------------	---------------	-------------------	----	--------------------	------

Using Control Software

The CAM-210-NDI-PTZ can be controlled via the PTZ Camera Control software included in the WyreStorm Management Suite. Connection can be made via LAN or RS-232 to test or troubleshoot camera functions.



Troubleshooting

No or Poor-Quality Picture (snow or noisy image)

- Verify that WyreStorm CAM-210-NDI-PTZ has been selected in your software's device settings
- Check Web UI settings for Video resolution and Frame rate to ensure compatibility with your software
- Verify that the device is not in standby
- Verify that power is being supplied to the device
- Verify that all connections are not loose and are functioning properly
- Verify that the RJ-45 cable is properly terminated following EIA568B standard

Troubleshooting Tips:

- WyreStorm recommends using a cable tester or connecting the cable to other devices to verify functionality.