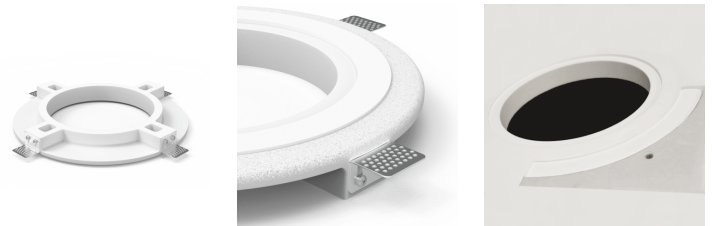


Product information:

The GFC06 gypsum flush mount installation ring is specially designed for the CELO speaker series. With this installation ring, you can ensure an utterly flush installation of the grill on the ceiling. With the adjustable zinc-plated supports you can seamlessly install the CELO in ceilings of 9,5 mm to 19,5 mm thickness. This ring is made of high-quality gypsum and has a large contact surface for filling plaster. The new MK2 version of this gypsum ring is finished with a rough texture for even better adhesion with the plaster, for an overall better finish.



Product Features:

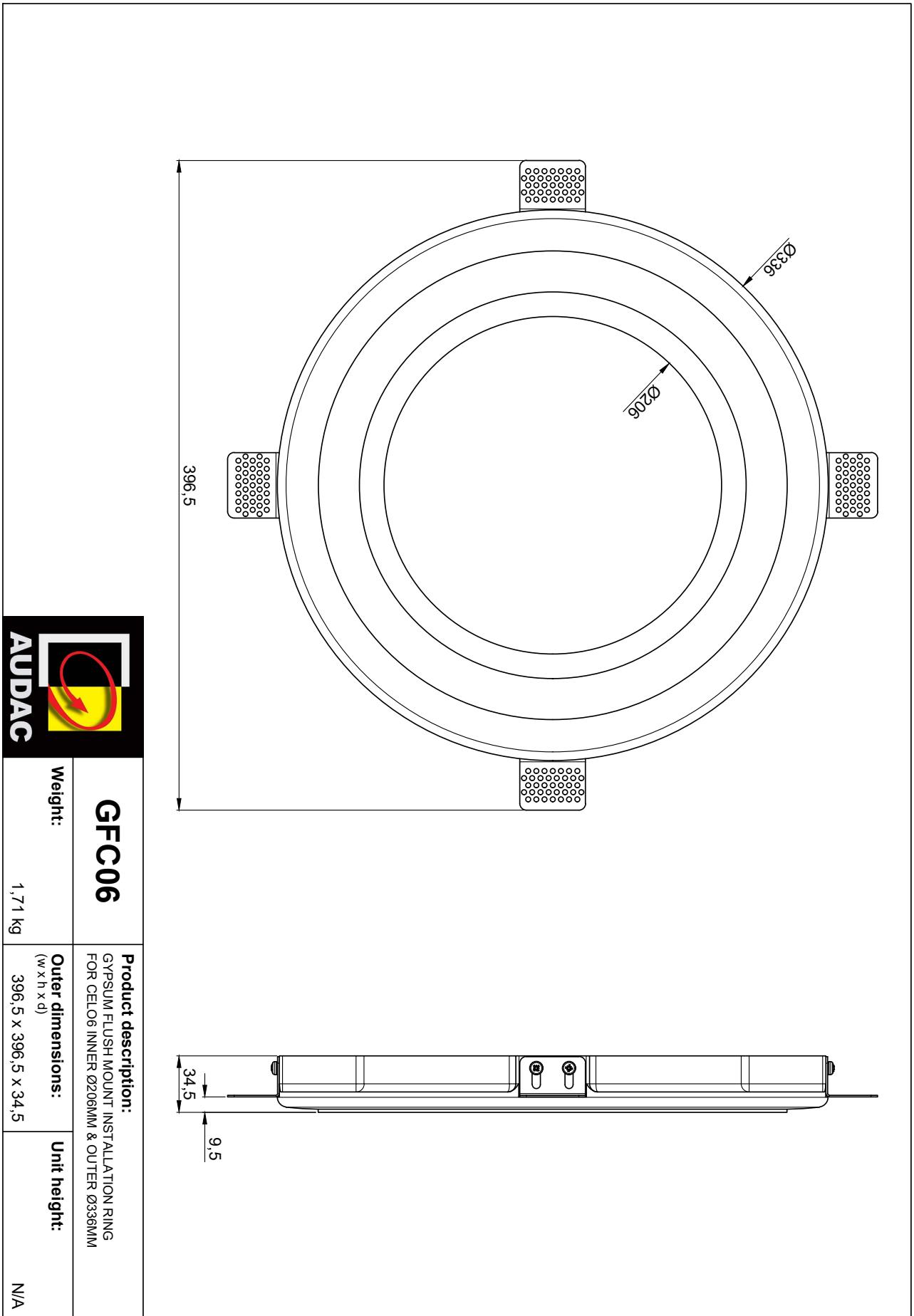
Dimensions		336 x 34.5 mm (Ø x D)
Cut-out measurement		340 mm (Ø)
Weight		1.71 kg
Construction		Gypsum
Accessories	Included	4 x Levelling ear with spring washers
		M4x8 bolts

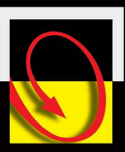
Variants:

- GFC06MK2 - Rough texture finished gypsum ring

Shipping & Ordering:

Packaging	Cardboard box
Shipping weight	2 kg



	GFC06	Product description: GYPSUM FLUSH MOUNT INSTALLATION RING FOR CELO6 INNER Ø206MM & OUTER Ø336MM	Unit height: N/A
	Weight: 1,71 kg	Outer dimensions: (w x h x d) 396,5 x 396,5 x 34,5	